



2018 ULTRATAX CS, v.2018.1.0
User Bulletin UT-18.1.0: Initial Release

November 19, 2018

This user bulletin describes special information related to UltraTax CS Platform.

ENHANCEMENTS

Estimated Value Continuous Mode

This release of 2018 UltraTax CS includes the ability to enable Continuous Mode for estimated values that can aide in initial client interviews. To enable continuous mode while a client is open, choose **Edit > Estimated Value > Continuous Mode** or right-click and choose **Estimated Value > Continuous Mode** from the context menu on any input screen. When continuous mode is enabled, UltraTax CS will automatically place an Estimated Value button at the front of each input screen data entry field where an estimated value is entered.

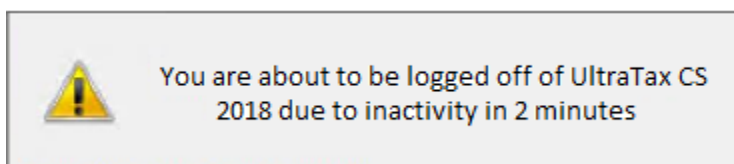


UltraTax CS generates an Estimated Value diagnostic for each input screen data entry field that contains an estimated value. For larger clients, the Estimated Value Continuous Mode can be used in conjunction with Data Entry Mode where client calculations are turned off to help speed up the data entry process for clients with many state returns or activities. For more information on estimated values, see [Indicating an estimated value](#) in our Help & How-To Center.


Sign-in authentication enhancements

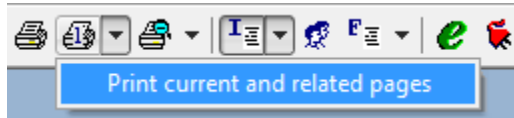
This release of 2018 UltraTax CS includes enhancements to improve the sign-in authentication process. These enhancements include a warning when Caps Lock is enabled, a warning when you're about to be logged out for inactivity, and automatic reauthentication when you restart UltraTax CS after applying software updates.

The inactivity warning displays two minutes before your authenticated session expires, prompting you to keep your current session active by using your mouse or keyboard to keep your session active. If the application doesn't detect any activity in that two-minute timeframe, you will be signed out of UltraTax CS and will need to log in again.



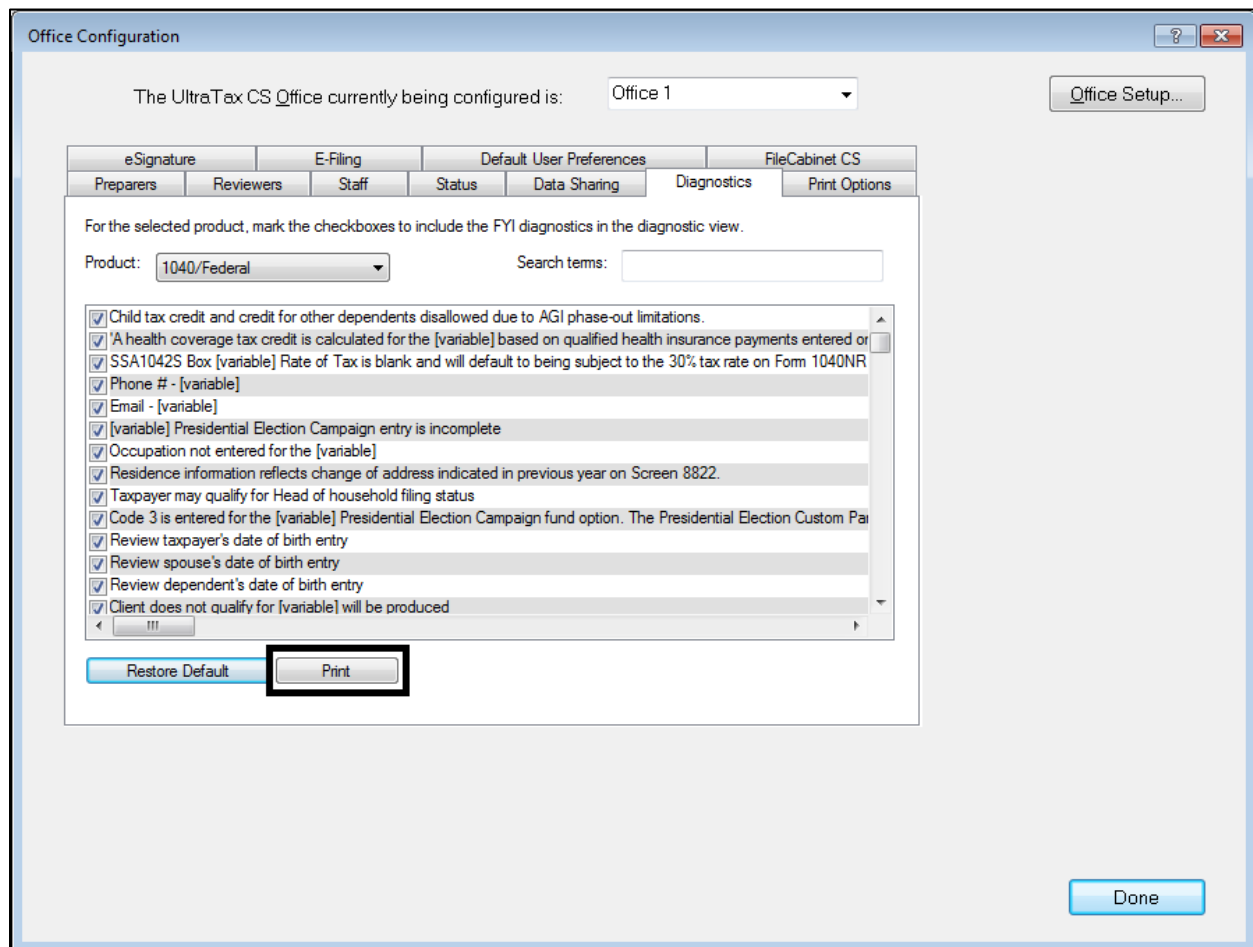
Print current and related pages

This release of 2018 UltraTax CS includes a multi-page print option. Select the Print current and related pages option from the Print Current Page icon  drop-down in the UltraTax CS toolbar or right-click and select **Print One Page and Related Pages** from the context menu. This feature will print the active page or input screen as well as any other related pages or input screens to help streamline those targeted print jobs. For details, see [Printing the current page and related pages](#) in our Help & How-To Center.



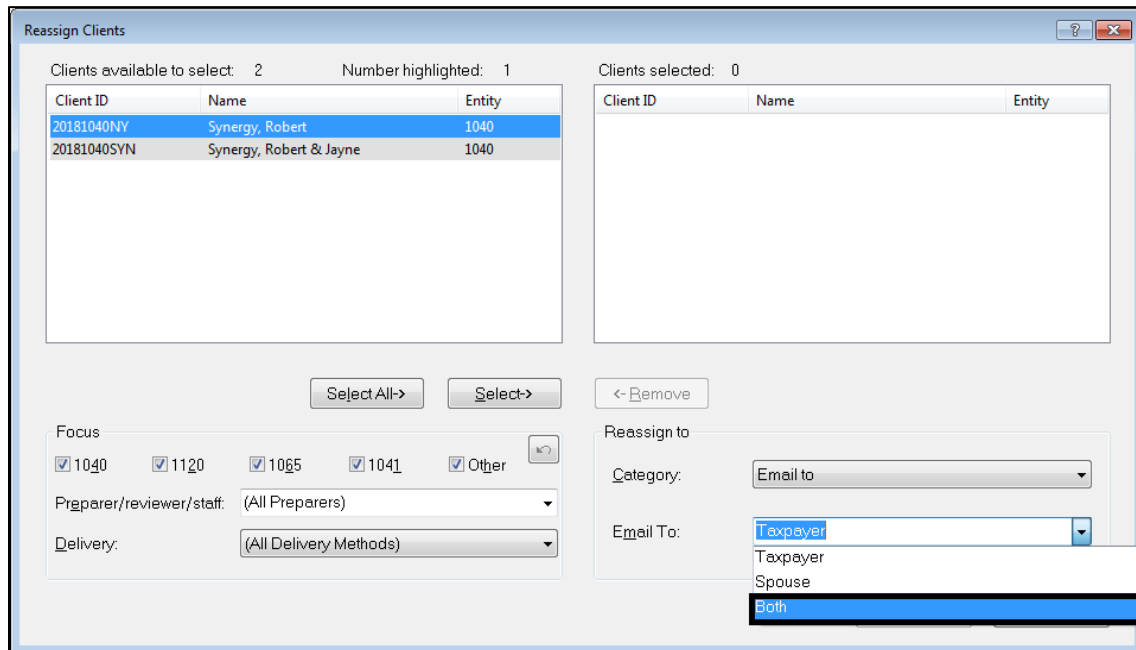
FYI Diagnostics Report

This release of 2018 UltraTax CS includes the ability to print a Diagnostics report from the **Setup > Office Configuration > Diagnostics** tab which lists all FYI diagnostics for the selected product and indicates whether they are currently set to display in the Diagnostic view. For more information, see [Reviewing diagnostic messages](#) in our Help & How-To Center.



Reassign Clients – Email to

This release of 2018 UltraTax CS includes the ability to easily change the **Email to** option for batches of 1040 clients. You can do so via the **Utilities > Reassign Clients** dialog and can specify the **Email to** recipient as Taxpayer, Spouse, or Both. Clients other than Married Filing Joint (MFJ) clients will not be assigned to Spouse or Both if they are selected for reassignment. The **Email to** client option can also be set on a client-by-client basis from the **Setup > Client Communications** dialog. For more information, see [Updating the email recipient for a group of 1040 clients](#).



PDF Security

In an ongoing effort to maintain the highest security possible, UltraTax CS has increased encryption on all Portable Document Format (PDF) files printed from the application. This is part of a continuous effort to protect the safety and integrity of a client's sensitive data.

Video Library access

Our Help & How-To Center includes free video demonstrations of common processes and software features, and you can now access those videos directly from UltraTax CS by choosing **Help > Additional Resources > Video Library**. The Video Library includes links to the corresponding help articles with the videos embedded directly in the article, so you can view the video and read the text on the same page.

Qualified Business Income Deduction Report

This release of 2018 UltraTax CS includes a new Tax Qualified Property report for 1040, 1065, 1120S, 1041, and 990 activities that have been marked as qualifying as a trade or business for Section 199A. To indicate an activity qualifies, go to **Setup > Activity** while in the asset tab, and mark the box **Qualifies as trade or business for Section 199A**.

You can exclude an asset from the report and stop the information transfer to the tax return by marking the option **Exclude asset from qualified business income deduction** on the asset's Other tab.

Personal Property Exchange

This release of 2018 UltraTax CS updates the asset tab so that like-kind exchanges are no longer applicable for section 1245 property after 12/31/17. For book purposes and several states (CA, IA, MN, and NH), section 1245 assets can still be disposed of as a like-kind exchange. The 2018 UltraTax CS release includes a way to dispose of section 1245 property as Sold/Scrapped for tax purposes and like-kind exchange for book/state purposes for tax years beginning in 2018 and later.

In order to be able to dispose of an asset as a like-kind exchange for book purposes, **Follows 1031 Pre TCJA** must be marked under **Setup > Treatments > Options** for the Book treatment.

The screenshot shows the 'Treatment Options' dialog box. The 'Title' field is set to 'Book' and 'Dependent treatments' is 'None'. There is a checkbox for 'Make treatment equal to Tax' which is unchecked. The 'Calculation' tab is active, with sub-tabs for 'Sec 179' and 'New Asset Defaults'. Below this, there is a note: 'Calculations for section 179 use the Tax treatment limits. Mid-quarter application for current-year acquisitions'. There are three radio buttons: 'System evaluated' (selected), 'Force application', and 'Halt application'. Under 'Miscellaneous options', the 'Like kind exchange:' dropdown is set to 'Do not follow IRS Notice 2000-4 and Reg 1.168(i)-6'. There are several checkboxes: 'Apply luxury (passenger) auto limits' (unchecked), 'Vehicle optimization follows Tax' (unchecked), 'Follows 1031 Pre TCJA' (checked and highlighted with a black box), 'Use 100% for business use percentage' (unchecked), and 'Follow GAAP calculations for disposals' (unchecked). The 'Bonus' section has a label 'Comply with Bonus for:' and five checkboxes: '30% Bonus (Placed in svc 9/11/01 to 5/5/03)', '50% Bonus & 30% election (Placed in svc 5/6/03 to 12/31/04)', '50% GO Zone bonus (Placed in svc 8/27/05 to 12/31/07)', 'Bonus (Placed in svc 1/1/08 to 12/31/26)', and '50% Disaster Area bonus'. At the bottom are 'OK' and 'Cancel' buttons.

By default, the state treatments of CA, IA, MN, and NH will be set to dispose of section 1245 property as a like-kind exchange for state purposes.

SPECIAL INFORMATION

Thomson Reuters Authenticator Display Card

Thomson Reuters Authenticator Display Cards provide CS Professional Suite and Onvio customers with an additional multi-factor authentication (MFA) method. These devices are the size of a credit card and enable users to implement MFA without installing an authenticator app on a mobile device, or as a backup method that you can use in case of a lost or broken mobile device.

You can use the display card to verify your account when you log in to UltraTax CS and again if you transmit returns for e-filing. When UltraTax CS prompts you to verify your account via MFA, use the Thomson Reuters Authenticator Display Card to generate a six-digit numerical code, and then enter that code in the authentication prompt.

For more information, see [Learning about multi-factor authentication devices](#). For details on pricing and ordering, [visit the Forms CS website](#).

